



Craig S. Gerhart  
County Executive

## COUNTY OF PRINCE WILLIAM

OFFICE OF EXECUTIVE MANAGEMENT


1 County Complex Court, Prince William, Virginia 22192-9201  
(703) 792-6600 Metro 631-1703 FAX: (703) 792-7484

BOARD OF COUNTY SUPERVISORS

Sean T. Connaughton, Chairman  
Maureen S. Caddigan, Vice Chairman  
Hilda M. Barg  
W. S. Wally Covington, III  
John D. Jenkins  
Martin E. Nohe  
Corey A. Stewart  
John T. Stirrup

June 14, 2006

TO: Board of County Supervisors

FROM: Susan Roltsch   
Assistant County Executive

THRU: Craig S. Gerhart  
County Executive

RE: 2006 Bond Referenda Proposal

Please find attached presentation slides for the proposed 2006 Bond Referenda. This is a work session item scheduled for presentation to the Board of County Supervisors on June 20<sup>th</sup>. The attached slides set forth a three part presentation covering libraries, parks, and roads.

Attachment



# 2006 Bond Referenda Proposal

Work Session  
June 20, 2006

## Bond Referenda Timeline

- April 25 – BOCS Approved CIP
- July 25<sup>th</sup> – BOCS Approves Bond Program
- Aug. 1<sup>st</sup> – BOCS Appoints Citizen Bond Committee
- Aug. 1<sup>st</sup> thru Sept. 8<sup>th</sup> – Gear Up for Public Information Campaign
- Sept. 8<sup>th</sup> (no later than) – File Program with Election Board
- Sept. 8<sup>th</sup> thru Nov. 7<sup>th</sup> – Public Information Campaign
- Nov. 7<sup>th</sup> – Bond Referenda



## Three Part Presentation

- Libraries**      Dick Murphy  
Library Director
  
- Parks**      Jay Ellington  
Park Authority Executive Director
  
- Roads**      Tom Blaser  
Public Works Chief of Transportation

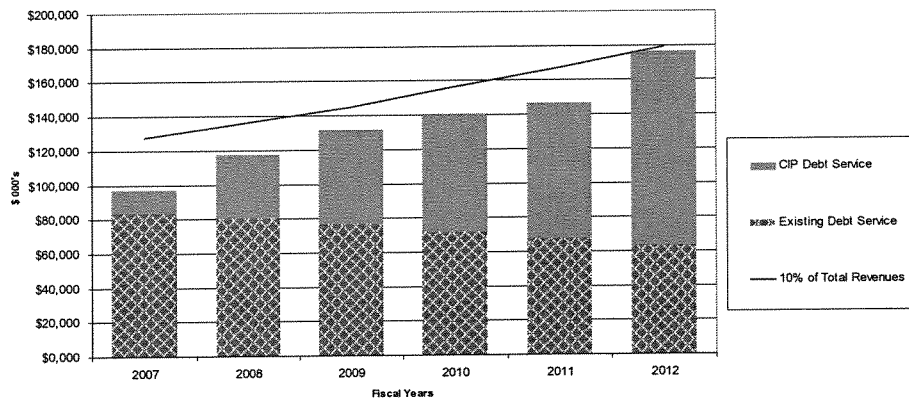
Date: 6/14/2006



2

## Adhering to Sound Financial Policies

Debt Service Capacity - County & Schools



Date: 6/14/2006



3

## FISCAL IMPACTS - NOVEMBER 2006 BOND REFERENDA

Parks Referendum 2006							
	FY 07	FY 08	FY 09	FY 10	FY 11	FY 12	FY 07 - 12
Facility/Program Operating Cost	\$ 679,658	\$ 912,545	\$ 1,066,911	\$ 1,132,162	\$ 1,401,260	\$ 1,626,103	\$ 6,818,639
Debt Service	\$ -	\$ -	\$ 1,100,000	\$ 2,830,000	\$ 2,862,000	\$ 2,781,000	\$ 9,573,000
November 2006 Road Bond Referendum							
	FY 07	FY 08	FY 09	FY 10	FY 11	FY 12	FY 07 - 12
Facility/Program Operating Cost	\$ -	\$ -	\$ -	\$ -	\$ -	\$ -	\$ -
Debt Service	\$ -	\$ 6,300,000	\$ 11,835,000	\$ 14,284,000	\$ 20,048,000	\$ 27,734,000	\$ 80,221,000
November 2006 Library Bond Referendum							
	FY 07	FY 08	FY 09	FY 10	FY 11	FY 12	FY 07 - 12
Facility/Program Operating Cost	\$ -	\$ -	\$ 91,508	\$ 1,797,626	\$ 2,323,705	\$ 4,177,655	\$ 8,390,494
Debt Service	\$ -	\$ -	\$ -	\$ 385,000	\$ 2,299,500	\$ 4,425,500	\$ 7,110,000
<b>Total Operating and Debt Service</b>	<b>\$ 679,658</b>	<b>\$ 7,212,545</b>	<b>\$ 14,113,419</b>	<b>\$ 20,428,788</b>	<b>\$ 28,934,465</b>	<b>\$ 40,744,258</b>	<b>\$ 112,113,133</b>

Date: 6/14/2006



4



Prince William County Government

## 2006 Bond Referendum Libraries

June 20, 2006

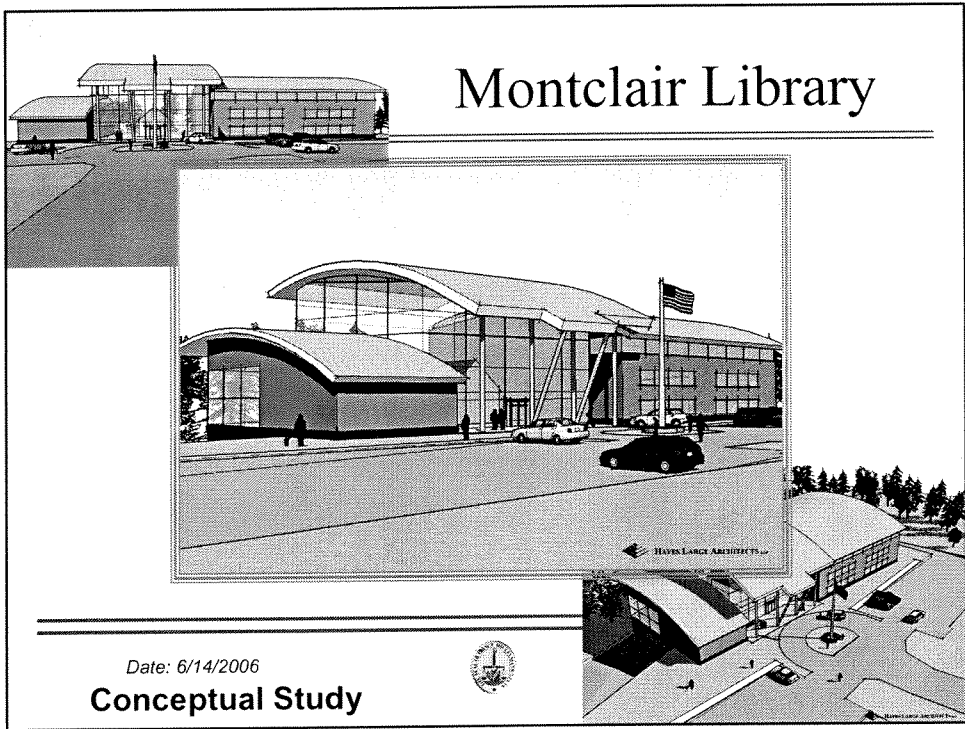
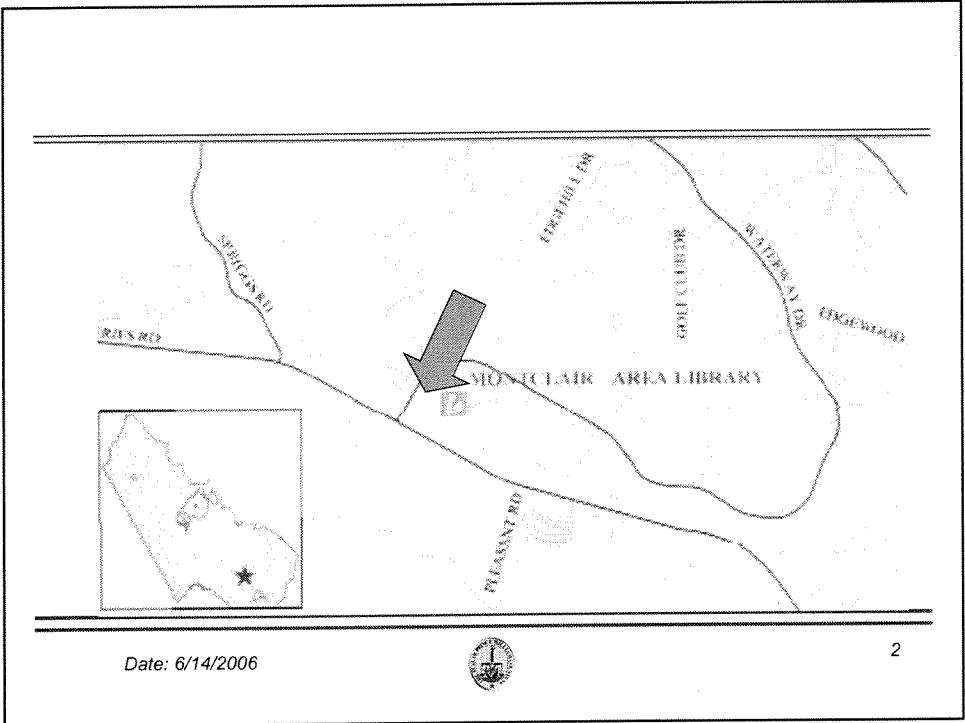
### Library Projects

<u>Name</u>	<u>Size</u>	<u>Open</u>	<u>Total Cost</u>
<input type="checkbox"/> Montclair	20,000 sq ft	2011	\$23,023,042
<input type="checkbox"/> Gainesville	20,000 sq ft	2012	\$24,175,550

Date: 6/14/2006



1





## Service Need:

- First new library facilities since 1994
- Population growth
  - ◆ 1994: 240,237
  - ◆ 2005: 354,383
  - ◆ 2010: 416,785
- Identified in Comprehensive Plan
  - ◆ Below sq ft standard
  - ◆ Below books/capita standard
- Incorporates historic properties

73% Increase



Date: 6/14/2006



6

## Citizen Satisfaction With Library Services

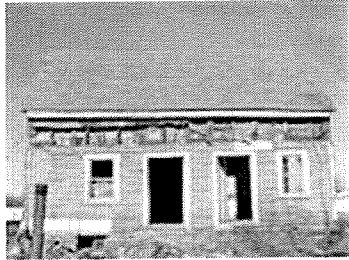
<input type="checkbox"/> Region	2003	2004	2005
<input type="checkbox"/> Brentsville	97.8%	96.7%	94.8%
<input type="checkbox"/> Dale City	97.5%	97.3%	97.6%
<input type="checkbox"/> <b>Gainesville / Linton Hall</b>	<b>93.7%</b>	<b>91.1%</b>	<b>87.8%</b>
<input type="checkbox"/> Lake Ridge Occoquan	98.7%	98.0%	98.3%
<input type="checkbox"/> Mid County	94.3%	97.6%	95.1%
<input type="checkbox"/> <b>North County</b>	<b>93.3%</b>	<b>89.3%</b>	<b>83.8%</b>
<input type="checkbox"/> Sudley / Yorkshire	93.8%	98.2%	100.0%
<input type="checkbox"/> Woodbridge / Dumfries	96.1%	93.6%	97.2%
<input type="checkbox"/> <b>Entire County</b>	<b>96.2%</b>	<b>96.2%</b>	<b>96.8%</b>

Date: 6/14/2006



7

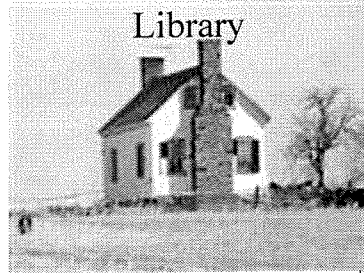




**Barnes House:**  
To be incorporated  
in the Montclair  
Library

**Bushey Park House:**

To be incorporated in  
the Gainesville  
Library



Both of these houses were middle class farm homes, estimated to have been built in the late 1700's. Few properties of this type are left in the county.

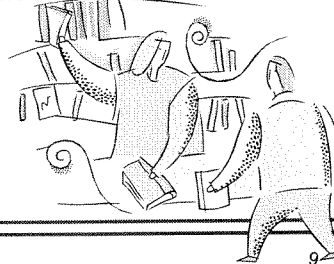
Date: 6/14/2006



8

## Library Operating Costs

- Extensive use of new technology will reduce operating costs in the new facilities, but...
- Libraries remain labor intensive operations.
- Start-up costs include the opening day collections at each library, plus all computers for database access.
- On-going costs include staff and new materials



Date: 6/14/2006



9

November 2006 Library Bond Referendum								
OPERATING IMPACTS	Current Year	FY 07	FY 08	FY 09	FY 10	FY 11	FY 12	FY 07 - 12
Facility Operating Cost	-	-	-	-	117,950	232,814	454,421	805,185
Program Operating Cost	-	-	-	91,506	1,679,676	2,090,891	3,723,234	7,585,309
Total Operating Cost	-	-	-	91,506	1,797,626	2,323,705	4,177,655	8,390,494
Debt Service	-	-	-	-	365,000	2,299,500	4,425,500	7,110,000
Total Operating and Debt Service	\$0	\$0	\$0	\$91,506	\$2,182,626	\$4,623,205	\$8,603,155	\$15,500,494

Date: 6/14/2006



## 2006 Bond Referendum Parks

June 20, 2006

E. Jay Ellington  
Executive Director



## Method of Selecting Bond Projects

- 2002 – Park Authority Board Commissions Citizen Recreation Demand Survey
- 2003 – Board of County Supervisors Adopts County Comprehensive Plan Which Includes Levels of Service for Parks and Open Space
- 2004 – Citizen Focus Groups Convened to Identify Recreation Issues and Concerns – Strategic Issue Analyses Published
- 2005 – County Capital Improvement Plan Updated to Include Projected Future Park Bonds in 6-Year Intervals
- 2005-2006 – Park Authority Convenes Meetings with User Groups to Refine/Update Recreation Needs Analyses



## Needs Assessment Results

- Expand Indoor Recreation Facilities
- Add-On/Renovate Existing Facilities Where Possible
- Include Paths/Trails, Link Parks to Other Community Facilities
- Increase Open Space Through Land Acquisition
- Park Facilities and Levels of Service Standards Not Keeping Up with Population Growth



3



## Park Authority Strategic Plan Outcomes

- Service Delivery
  - GOAL 1: The needs of the residents of Prince William County will be met through the provision of a variety of quality leisure programs.
    - How – *Projects prioritized based on needs analyses and negotiations with Users*
- Citizen Involvement
  - GOAL 1: Through input from community/citizen involvement in the planning and development processes of the organization the needs of the community will be represented.
    - How – *User Groups part of process input*
- Increase Synergy Through Collaboration
  - GOAL 1: Recreation products and programs will be enhanced through building collaboration with other agencies, external organization and businesses.
    - How – *Maximize trails and field improvements through partnerships*



4



## 2006 PWC Park Bond Projects

Projects	District	Project Costs
Land Acquisition	Various	\$3.0
Indoor Center Expansions	Occoquan/Gainesville	\$11.0
Trails Development	Various	\$.75
Locust Shade Park-Phase II	Dumfries	\$4.5
Fuller Heights	Dumfries	\$4.5
Hellwig/Independent Hill	Brentsville/Coles	\$5.0
Sports Field Improvements	Various	\$2.5
Veterans Park Improvements	Woodbridge	\$.75

**TOTAL \$32.0**

### Funding in Millions

2006 Bond	\$27.0
Proffers	\$ 5.0



Park Bond Resolution passed April 19, 2006

5



## 2006 Park Bond Project Operating Cost Impacts

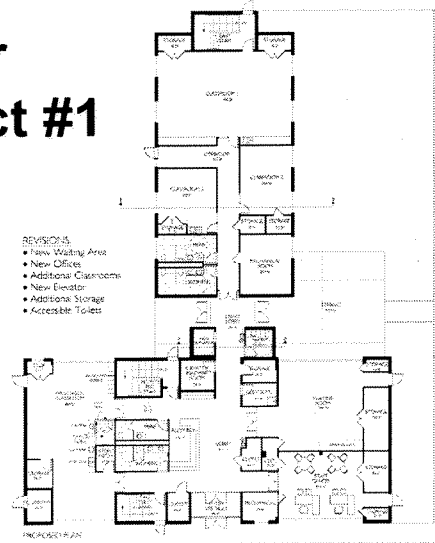
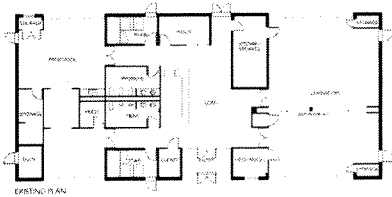
Project Title: Parks Referendum 2006		Current Year	FY 07	FY 08	FY 09	FY 10	FY 11	FY 12	FY 07 - 12
<b>OPERATING IMPACTS</b>									
Facility Operating Cost	-	227,658	459,545	613,911	679,162	948,260	1,173,103	4,101,639	
Program Operating Cost	-	452,000	453,000	453,000	453,000	453,000	453,000	2,717,000	
<b>Total Operating Cost</b>	\$0	<b>\$679,658</b>	<b>\$912,545</b>	<b>\$1,066,911</b>	<b>\$1,132,162</b>	<b>\$1,401,260</b>	<b>\$1,626,103</b>	<b>\$6,818,639</b>	
Debt Service	-	-	-	1,100,000	2,830,000	2,862,000	2,781,000	9,573,000	
<b>Total Operating and Debt Service</b>	\$0	<b>\$679,658</b>	<b>\$912,545</b>	<b>\$2,166,911</b>	<b>\$3,962,162</b>	<b>\$4,263,260</b>	<b>\$4,407,103</b>	<b>\$16,391,639</b>	
Operating Revenue	-	-	-	518,782	550,000	600,000	675,000	2,343,782	



6



# Indoor Center Expansion Project #1 Ben Lomond Community Center



- REVISIONS
- New Waiting Area
  - New Office
  - Additional Classrooms
  - New Elevator
  - Additional Storage
  - Accessible Toilets

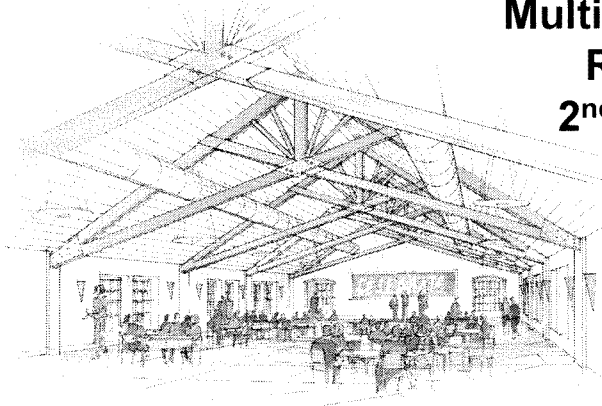
CENTERBROOK  
10000 14th Street, Suite 100  
San Diego, CA 92128  
Tel: 619.451.1234  
Fax: 619.451.1235

BEN LOMOND  
ADDITION AND RENOVATION  
FIRST FLOOR  
APRIL 24, 2016



7

# Ben Lomond Community Center Multi-Purpose Room 2<sup>nd</sup> Floor



CENTERBROOK  
10000 14th Street, Suite 100  
San Diego, CA 92128  
Tel: 619.451.1234  
Fax: 619.451.1235

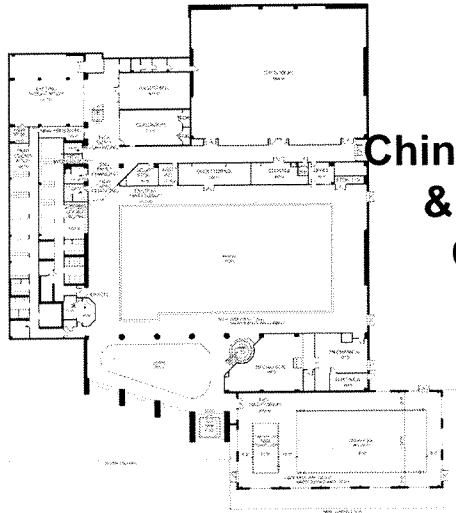
BEN LOMOND  
ADDITIONS AND RENOVATIONS  
MULTI-PURPOSE ROOM RENDERING  
APRIL 24, 2016



8

# Indoor Center Expansion Project #2

# Chinn Aquatics & Fitness Center



- REVISIONS:
- Two Additional Family Changing
  - Racers (one w/ plumbing)
  - New Entry to Locker Rooms
  - New Storage off Weight Room
  - New Classroom with Storage
  - New Natatorium with Leisure and Therapeutic Pools

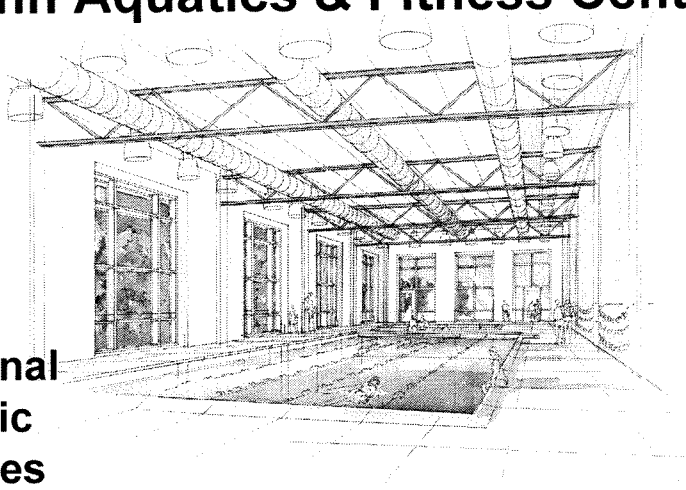
CENTERBROOK  
 Architects and Planners, LLC  
 1000 Main Street  
 Westborough, MA 01581  
 Phone: 508.735.1234  
 Fax: 508.735.1235  
 www.Centerbrook.com

CHINN AQUATICS AND FITNESS CENTER  
 ADDITION AND RENOVATION  
 LOWER FLOOR PRELIMINARY  
 APRIL 26, 2006



# Chinn Aquatics & Fitness Center

## Additional Aquatic Facilities

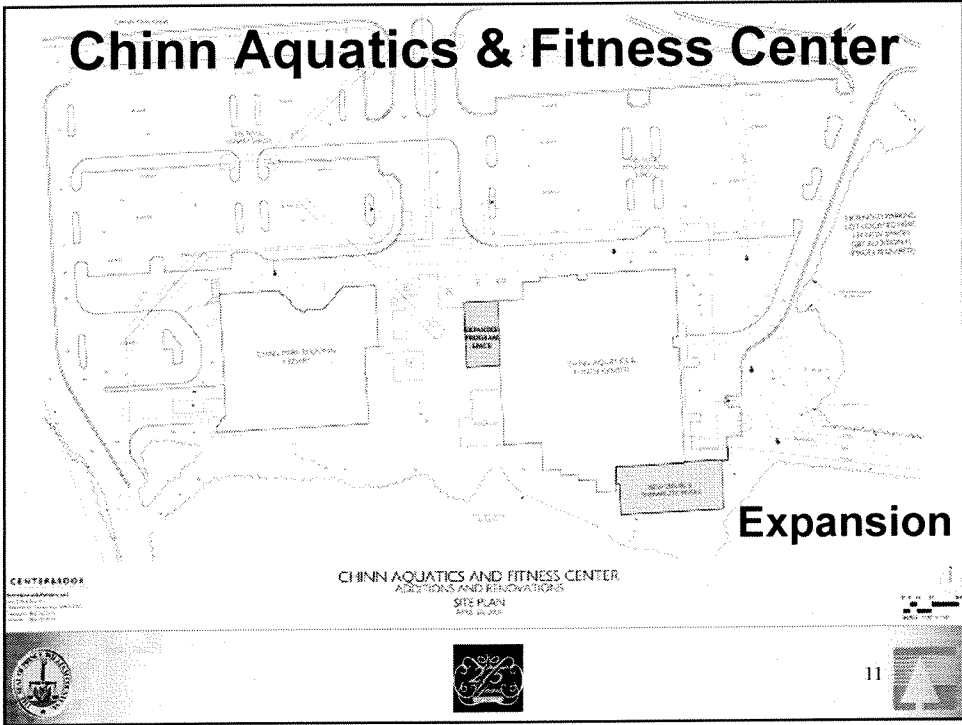


CENTERBROOK  
 Architects and Planners, LLC  
 1000 Main Street  
 Westborough, MA 01581  
 Phone: 508.735.1234  
 Fax: 508.735.1235  
 www.Centerbrook.com

CHINN AQUATICS AND FITNESS CENTER  
 ADDITIONAL AND RENOVATIONS  
 NATATORIUM RENDERING  
 APRIL 26, 2006

NET TO SCALE





# Trails Development

- Develop Trails in Existing Park Facilities
- Link Parks to Parks
- Link Parks to Schools
- Link Parks to Existing Trails
- Partner with Community to Maximize Trail

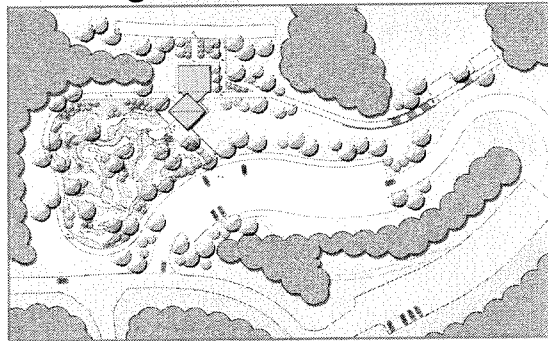



12



# Locust Shade Park Phase II

- Original Park Opened 1980
- Minor Improvements Made Periodically
- Park Bond Project Enhances Revenue Producing Features



13



DESIGN LAYOUT NOTES:

- REDUCES PEDESTRIAN & VEHICLE LAP
- COMPLET E BY GRADING SHOULDER PROGRAM
- ELEMENTS TO ONE SIDE OF THE ROAD
- IMPROVES CIRCULATION AND THE LOCAL ACCESS
- ROADS & AVOIDS DEAD END PARKING
- PROVIDES DROP OFF AREA FOR PATRONS

PROJECT NO. 28022

FULLER HEIGHTS  
PRINCE WILLIAM COUNTY, VIRGINIA

	SKETCH:	SITE DESIGN & GRADING	Scale:	NTS		01
	Drawn by:		Drawn by:	LVG		
	Reviewed by:		Reviewed by:	MMG		
	Date:		Date:	03/24/04		

# Fuller Heights Park Phase I

Construct New Community Park in Dumfries

Land purchased from 1998 Bond

14



# Hellwig/Independent Hill

**George Hellwig Memorial Park  
Preferred Alternative**  
Prince William County Park Authority  
Huntington, Virginia, 22424  
May 10, 2006



**Relocate  
Sports  
Field from  
County  
Landfill**

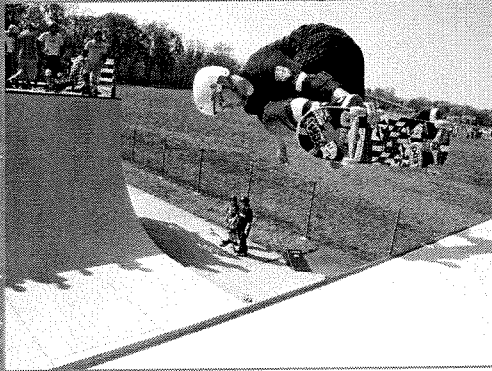
**Hellwig  
User Group  
Preferred Field  
Design**

# Sports Field Improvements

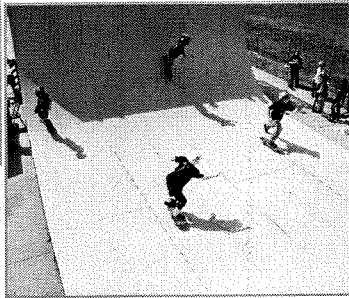
- Improvements to Existing School and Park Fields
- Locations to be Identified with Sports User Group Input



# Veterans Park Improvements



## Expansion of Existing Skate Park Facility



17

## 2006 PWC Park Bond Projects

Projects	District	Project Costs
Land Acquisition	Various	\$3.0
Indoor Center Expansions	Occoquan/Gainesville	\$11.0
Trails Development	Various	\$.75
Locust Shade Park-Phase II	Dumfries	\$4.5
Fuller Heights	Dumfries	\$4.5
Hellwig/Independent Hill	Brentsville/Coles	\$5.0
Sports Field Improvements	Various	\$2.5
Veterans Park Improvements	Woodbridge	\$.75

**TOTAL \$32.0**

### Funding in Millions

2006 Bond	\$27.0
Proffers	\$ 5.0



18

Park Bond Resolution passed April 19, 2006



## 2006 Bond Referendum Roads

June 20, 2006

### Adhering to Strategic Plan

---

**Community Outcomes:** Achieve a rate of 55% of citizens satisfied with their ease of getting around Prince William County, as measured by the Citizen Survey.

**Objectives:**

- Examine the feasibility and construct road and transit projects serving innovation, County government center, Potomac Communities corridor, and western/I-66 Corridor
- Construct roads in the road bond program and develop a road bond recommendation to present to the board periodically.



## 2006 Road Bond Presentation

---

---

### Presentation Outline

- Progress on Previous Road Bond Projects
  - Road Construction Process
  - Project Descriptions
  - Project Cost and Schedules
  - Referendum Process
- 
- 

Date: 6/14/2006



2

## Progress on 1998 Road Bonds in 2002 & 2006

---

---

<u>Project</u>	<u>Status in 11/2002</u>	<u>Status in 11/2006</u>
Spriggs Road Phase 1	Design	Completed
Parkway Extension to Route 1	Design	Completed
Wellington Road	No Progress	Completed
Spriggs Road Phase II	Design	Under Construction
Ridgefield Road	Completed	Completed
Linton Hall Road	No Progress	Design/Under Construction
Infrastructure @ Innovation	Under Construction	Completed

---

---

Date: 6/14/2006



3

## Progress on 2002 Projects in 2006

<u>Project</u>	<u>Status 11/2006</u>
Benita Fitzgerald Drive	Completed
Sudley Manor Drive	Completed
Minnieville Road-Cardinal to Spriggs	Design
Minnieville Road- Old Bridge to Caton Hill	Under Construction
Route 15 Improvements	Under Construction

Date: 6/14/2006



4

## Progress on 2002 Projects in 2006 cont.

<u>Project</u>	<u>Status 11/2006</u>
Rt. 1 Improvements	
--Dale Boulevard to Featherstone Road	Design
--Joplin Road to Bradys Hill Road	Design
Parkway Intersection Improvements—Old Bridge	Under Construction
Parkway Intersection Improvements--Minnieville	Under Construction

Date: 6/14/2006



5

## Other Road Projects

<u>Project</u>	<u>Status 11/2006</u>
USMC Heritage Center	Completed
Manassas Airport Access Road	Completed
University Boulevard	Completed
Route 234/Route 1 Park and Ride Lot	Design
Innovation Drive	Completed
Discovery Boulevard	Completed

Date: 6/14/2006



6

## Road Construction Process

### Design Phase

#### Key Steps

- ◆ Scoping
- ◆ Preparation of Request for Proposals
- ◆ Solicitation and Award
- ◆ Design and Engineering
- ◆ *Design Alternative Selection (Public Involvement Process)*
- ◆ *Virginia Department of Transportation Review/Approval*
- ◆ Preparation of Environmental Permit
- ◆ *Department of Environmental Quality Review/Approval*

#### Time Frame

9-24 Months

\*Italics show steps with low level of control

Date: 6/14/2006



7

## Road Construction Process cont.

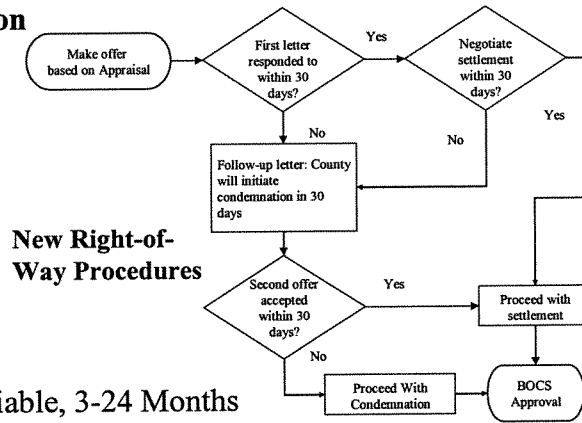
### Right-of-Way Acquisition

□ Key Steps

- ◆ Design Plats
- ◆ Appraisals
- ◆ Offers
- ◆ *Negotiation*
- ◆ Taking
- ◆ *Settlement*

□ Time Frame

variable, 3-24 Months



\*Italics show steps with low level of control

Date: 6/14/2006



8

## Road Construction Process cont.

### Utility Relocation

□ Key Steps

- ◆ Utility Field Inspection Meeting
- ◆ *Easements*
- ◆ Plats
- ◆ *Plan & Estimate*
- ◆ Authorize
- ◆ *Field Relocation*

□ Time Frame

3-24 Months

\*Italics show steps with low level of control

Date: 6/14/2006



9



## Road Construction Process cont.

---

---

### Construction Phase

#### Key Steps

- ◆ Preparation of Bid Document
- ◆ Solicitation
- ◆ Award
- ◆ Notice to Proceed
- ◆ Construction
- ◆ Walk Through
- ◆ Punch List
- ◆ Acceptance

#### Time Frame

8-36 Months

\*Italics show steps with low level of control

---

---

Date: 6/14/2006



10

## Methods for Selecting Bond Projects

---

---

- Examined current and future Level of Service through the County's transportation network model
  - Examined consistency with County's plans
    - ◆ Comprehensive Plan
    - ◆ Strategic Plan
    - ◆ Capital Improvement Program
  - Considered recommendations from Public Works and Public Safety (Police and Fire & Rescue) staff
  - Considered corridors with safety concerns
  - Considered projects that have partial funding and project cost
    - ◆ Federal funds, State funds, proffers
  - Examined possibility of alternative construction methods (e.g. PPTAs)
  - The geographic distribution of improvements was considered.
- 
- 

Date: 6/14/2006



11

## Route 1 Improvements (Joplin to Bradys Hill)

The roadway extends north from Joplin Road to Bradys Hill Road to be widened to a divided 6-lane facility with a 16-foot raised median and curb and gutter. The total length of this project is 2,500 feet.

**Project Duration = 3 years 3 months**

**Cost Estimate = \$46,976,869**

### Significant Elements

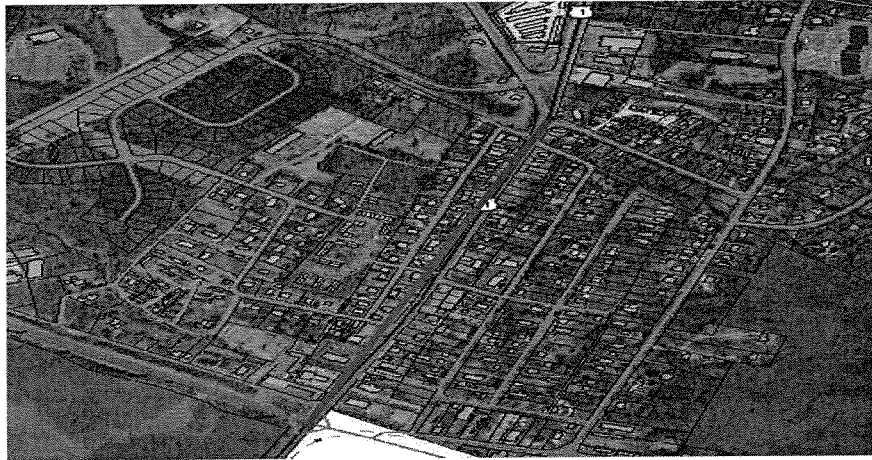
- ◆ Right of Way Acquisition (over 80 properties)
- ◆ Utility Relocation
- ◆ EA Conducted

Date: 6/14/2006



12

## Rt. 1 Improvements (Joplin→ Bradys Hill) Map



Date: 6/14/2006



13

## Route 1 Improvements (Dale to Featherstone)

From Dale Boulevard/ Rippon Boulevard to Featherstone Drive for widening to a divided 6-lane facility with a 16-foot raised median and curb and gutter. Project also includes construction cost for the grade separated interchange at the intersection of Route 1 and Dale Boulevard/Rippon Boulevard. The total length of this project is 9,200 feet-2,550 feet includes widening for Route 1 and 6,650 feet includes the proposed grade separated interchange at the intersection of Dale Boulevard/Rippon Boulevard.

**Project Duration = 4 years 5 months**

**Cost Estimate = \$46,490,498**

**Significant Elements**

- ◆ Environmental Mitigation
- ◆ Bridge
- ◆ Utility Relocation

Date: 6/14/2006



14

## Rt. 1 Improvements (Dale→ Featherstone) Map



Date: 6/14/2006



15

## Route 28 (Vint Hill to 234)

A 6-lane divided facility with a raised median. The project limits extend on Route 28 from the relocated Vint Hill Road to the on/off ramps for the Route 234 Bypass. At the north west corner of relocated Vint Hill Road, a short connection will be constructed to access from the relocated Vint Hill Road to the Vint Hill Road. The length of Route 28 is estimated to be 11,500 feet, the length of the relocated Vint Hill Road is estimated to be 4,800 feet, and the Vint Hill Road Connector is estimated to be 240 feet.

**Project Duration = 5 years**

**Cost Estimate = \$52,499,906**

**Significant Elements**

◆ NEPA (Federalized)

Date: 6/14/2006



16

## Route 28 (Vint Hill→ 234) Map



Date: 6/14/2006



17

## Minnieville Road (Spriggs to 234)

A 4-lane divided facility with a raised median. The project limits extend 300 feet northeast of the Dumfries Road (Route 234) intersection to 300 feet southwest of the Spriggs Road intersection. The length of this project is estimated to be 10,600 feet.

**Project Duration = 4 years 7 months**

**Cost Estimate = \$22,340,971**

### □ Significant Elements

- ◆ Right of Way Acquisition
- ◆ Public Involvement
- ◆ Environmental
- ◆ Traffic Maintenance

Date: 6/14/2006



18

## Minnieville Rd. (Spriggs→ 234) Map



Date: 6/14/2006



19

## Heathcote Boulevard

A 4-lane divided facility with a 16-foot raised median. The project limits extend from James Madison Highway (Route 15) to Old Carolina Road. The length of this project is estimated to be 1,300 feet.

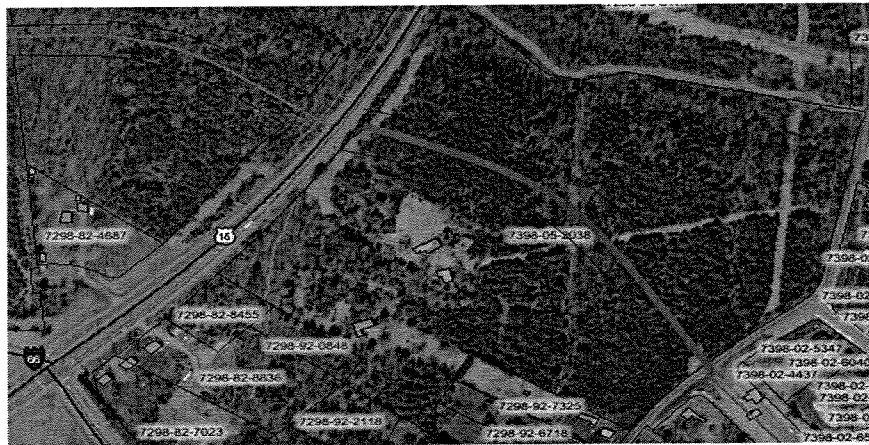
**Project Duration = 2 years 10 months**  
**Cost Estimate = \$10,060,075**

Date: 6/14/2006



20

## Heathcote Boulevard Map



Date: 6/14/2006



21

## PW Parkway (Hoadly to Minnieville)

A 6-lane divided facility with a raised median. The project limits extend from existing Hoadly Road to Minnieville Road. The length of this project is estimated to be 17,000 feet.

**Project Duration = 4 years 6 months**

**Cost Estimate = \$39,072,426**

### Significant Elements

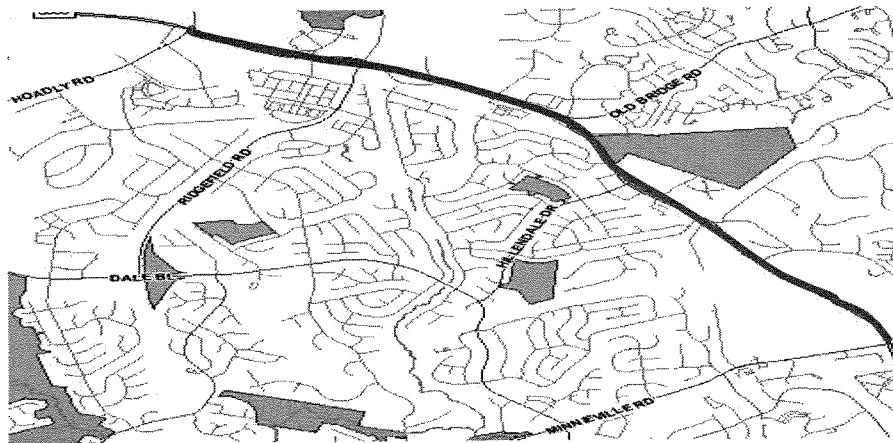
- ◆ Extensive Right of Way Acquisition
- ◆ Utility Relocations

Date: 6/14/2006



22

## PW PKWY (Hoadly→ Minnieville) Map



Date: 6/14/2006



23

## University Boulevard

---

---

A 4-lane divided facility with a raised median. The project limits extend from Sudley Manor Drive to Hornbaker Road. The length of this project is approximately 5,000 feet.

**Project Duration = 3 years 10 months**

**Cost Estimate = \$21,547,031**

**Significant Elements**

◆ Utility Relocation

---

---

Date: 6/14/2006



24

## University Boulevard Map

---



---

---

Date: 6/14/2006



25



## Route 28 (Vint Hill to Fitzwater)

A 4-lane divided facility with a raised median. The project limits extend from Fitzwater Drive to relocated Vint Hill Road. The length of this project is estimated to be 12,900 feet.

**Project Duration = 5 years**

**Cost Estimate = \$29,156,803**

### □ Significant Elements

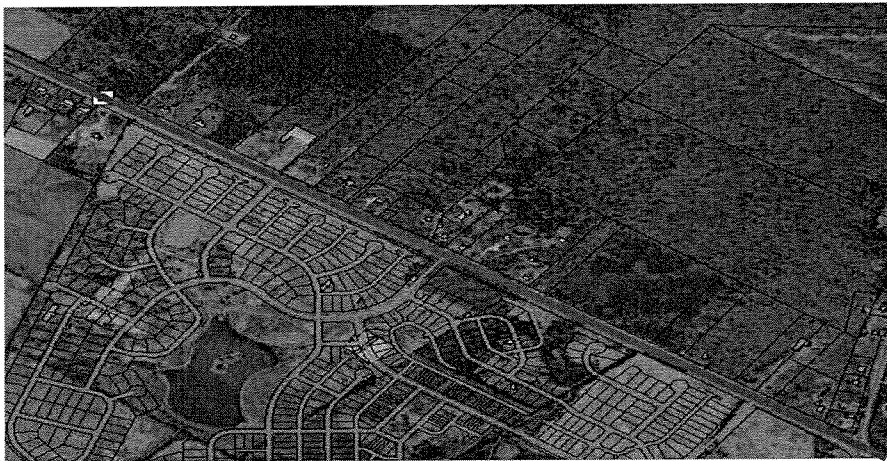
- ◆ Right of Way Acquisition
- ◆ Environmental
- ◆ Traffic Maintenance

Date: 6/14/2006



26

## Route 28 (Vint Hill→ Fitzwater) Map



Date: 6/14/2006



27

## Rollins Ford Road

---

---

A 4-lane divided facility with a raised median. The project limits extend from Vint Hill Road to the existing intersection of Songsparrow Drive/Yellow Hammer Drive. The length of this project is estimated to be 4,300 feet.

**Project Duration = 3 years 3 months**

**Cost Estimate = \$19,459,505**

**Significant Elements**

◆ Crossing Broad Run

---

---

Date: 6/14/2006

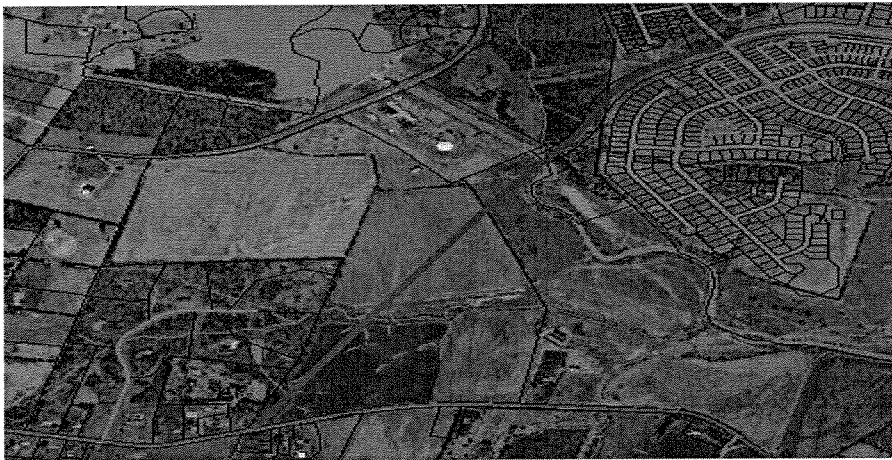


28

## Rollins Ford Road Map

---

---



---

---

Date: 6/14/2006



29

## Safety Improvements

---

---

A lump sum of \$20 million has been allocated to complete signal and safety improvements through out the county (site distance improvement, additional traffic signals, regrading, etc).

**Project Duration = Continuous**

**Cost Estimate = \$20,000,000**

---

---

Date: 6/14/2006



30

## Examples of Safety Improvements

---

---

### Specific Projects

- Catharpin and Route 55
- Route 29 and Pageland Lane
- Logmill Road
- Ashton and Godwin Pedestrian Improvements

### Other Types

- Pedestrian Crossings
- Intersection Improvements
- Turn Lanes

---

---

Date: 6/14/2006



31

## Expenditures by Project

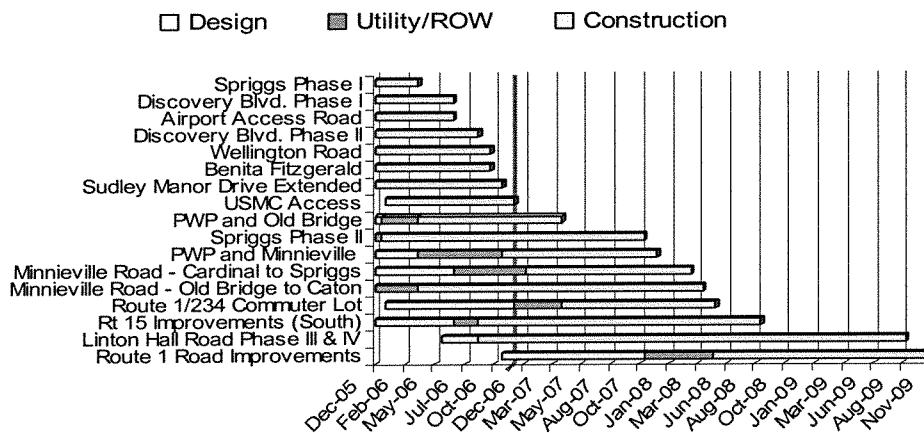
Project	Estimate	Project	Estimate
Route 1 Improvement Joplin to Bradys Hill	\$46,976,869	PW Parkway (Hoadly to Minnieville)	\$39,072,426
Route 1 Improvement Dale to Featherstone	\$46,490,498	University Boulevard	\$21,547,031
Route 28 (Vint Hill to 234)	\$52,499,906	Route 28 (Vint Hill to Fitzwater)	\$29,156,803
Minnieville Road (Spriggs to 234)	\$22,340,971	Rollins Ford Road	\$19,459,505
Heathcote Boulevard	\$10,060,075	Safety Improvements	\$20,000,000
		<b>Total Bond Package</b>	<b>\$307,604,084</b>

Date: 6/14/2006



32

## Current Project Schedule

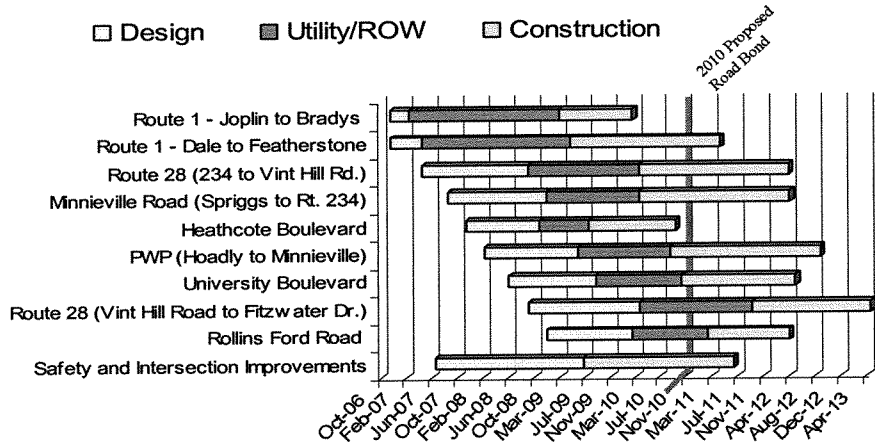


Date: 6/14/2006



33

## Proposed 2006 Road Bond Schedule



Date: 6/14/2006



34

## Bond Referenda Timeline

- April 23<sup>rd</sup> – BOCS Approved CIP
- July 25<sup>th</sup> – BOCS Approves Bond Program
- Aug 1<sup>st</sup> – BOCS Appoints Citizen Bond Committee
- Aug 1<sup>st</sup> thru Sept 8<sup>th</sup> – Gear Up for Public Information Campaign
- Sept. 8<sup>th</sup> (no later than) – File Program with Election Board
- Sept 8<sup>th</sup> thru Nov 7<sup>th</sup> – Public Information Campaign
- Nov. 7<sup>th</sup> – Bond Referenda

Date: 6/14/2006



35