

Upper Cabin Run Rehabilitation Project

DATE: April 18, 2008

SUBJECT: **PHOTO DOCUMENTATION OF CABIN RUN STREAM PROJECT**
(BEFORE AND AFTER DOCUMENTATION)

CREDITS: PROJECT MANAGERS - Chuck Williamson, PWC Watershed Mgmt.
Tom Dombrowski, PWC Watershed Mgmt.

DESIGN WORK - Tom Dombrowski, Chuck Williamson and Bill Kirby
(Paciulli, Simmons & Associates, Ltd).

CONSTRUCTION WORK - Raymond Zuspan, PWC Environmental Svcs.
and Chris Hunt, Mulch Solutions

PHOTO DOCUMENTATION - Tim Hughes, PWC Watershed Mgmt.

NARRATIVE DESCRIPTIONS - Tom Dombrowski, PWC Watershed Mgmt.

Cabin Run Restoration, Preconstruction



BEFORE - Location of #1 rock weir. (Photo zone 1)



AFTER - Location of #1 rock weir (photo zone 1)

Cabin Run Restoration, Preconstruction



BEFORE - Location #1, need to cut and fill of bank, add stone and mulch treatment to bank .

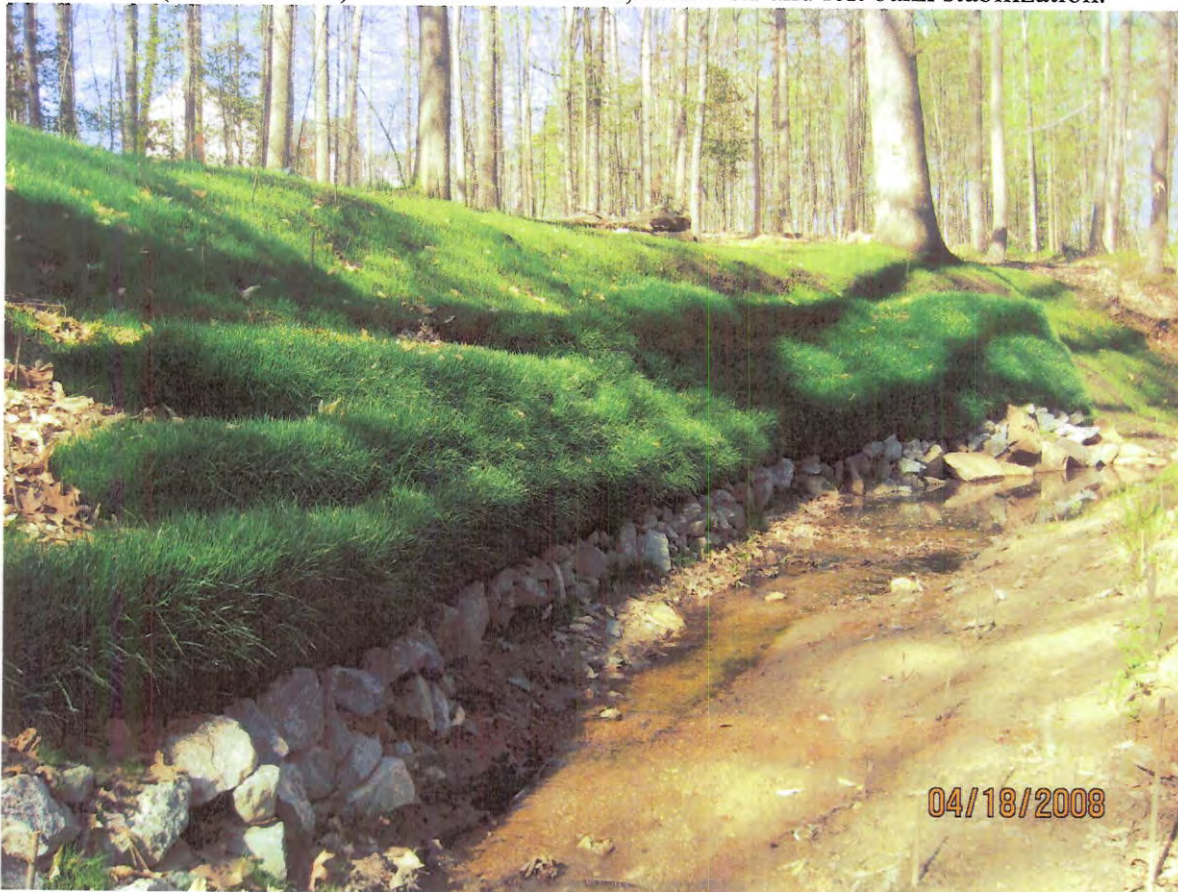


AFTER - Location #1, cut and fill of banks and stone and mulch bank treatment..

Cabin Run Restoration, Preconstruction



BEFORE – (Photo Zone 2) Future location of #2, rock weir and left bank stabilization.



AFTER – (photo zone2) Location of structure #2, rock weir and left bank stabilization with stone and filter socks.

Cabin Run Restoration, Preconstruction



BEFORE – (Photo Zone 2) left bank stabilization and right bank stabilization (below weir #2).



AFTER - left bank filtrex stabilization and right bank rock stabilization (below weir #2).

Cabin Run Restoration, Preconstruction



BEFORE – Right bank needs stone toe and bank stabilization.



AFTER - Location #4, stone toe and bank stabilization.

Cabin Run Restoration, Preconstruction



BEFORE – right bank needs rock toe and filtrex sox stabilization.



AFTER - rock toe treatment filtrex bank stabilization.

Cabin Run Restoration, Preconstruction



BEFORE – Left and bank needs stone toe filter sock and compost tea bank stabilization.



AFTER – Left and right bank stabilization with stone toe, filter sock and compost tea.

Cabin Run Restoration, Preconstruction



BEFORE – Eroded left stream bank before stabilization.

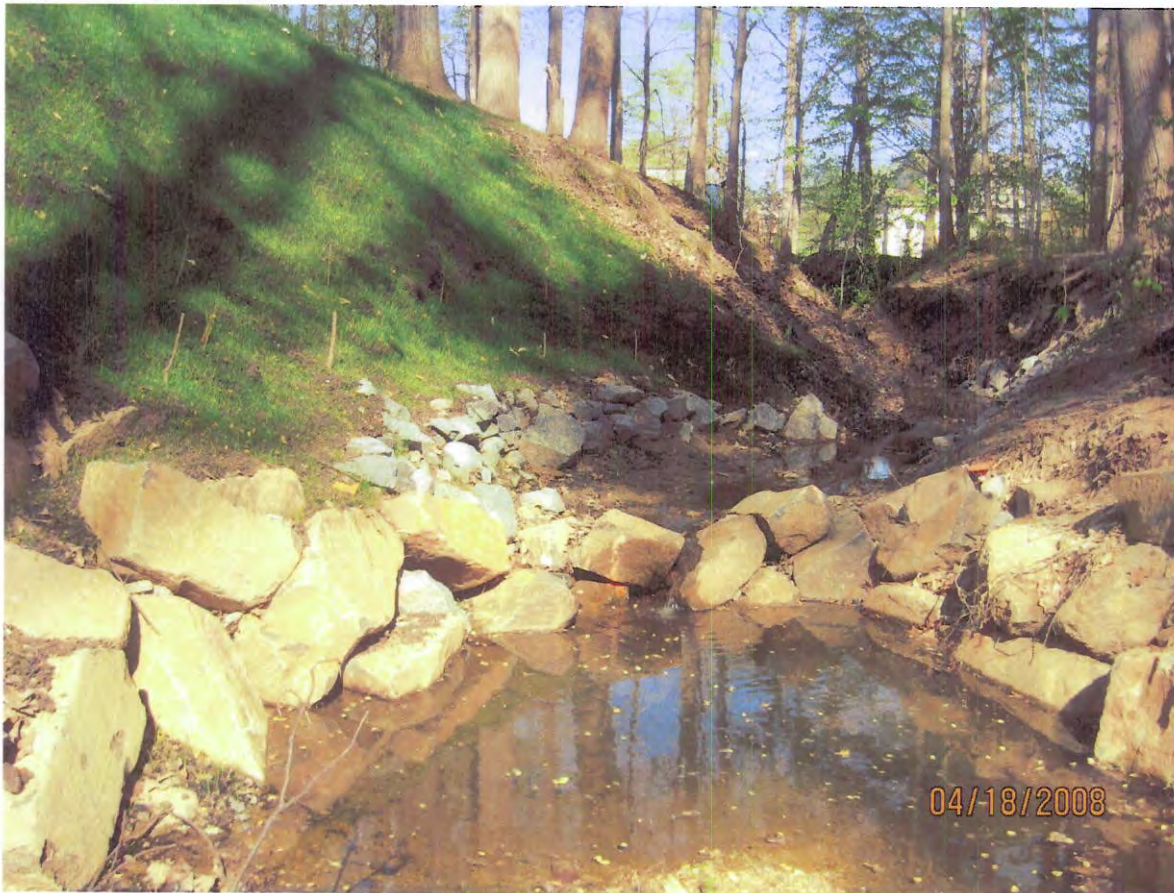


AFTER – filtrex sox supported by rock toe structure and bank stabilization with compost tea.

Cabin Run Restoration, Preconstruction



BEFORE - Location for weir #3



AFTER - Location for rock weir #3 which tied into the sill created for bank stabilization.

Cabin Run Restoration, Preconstruction



BEFORE - bank needs stabilization upstream from weir #3.

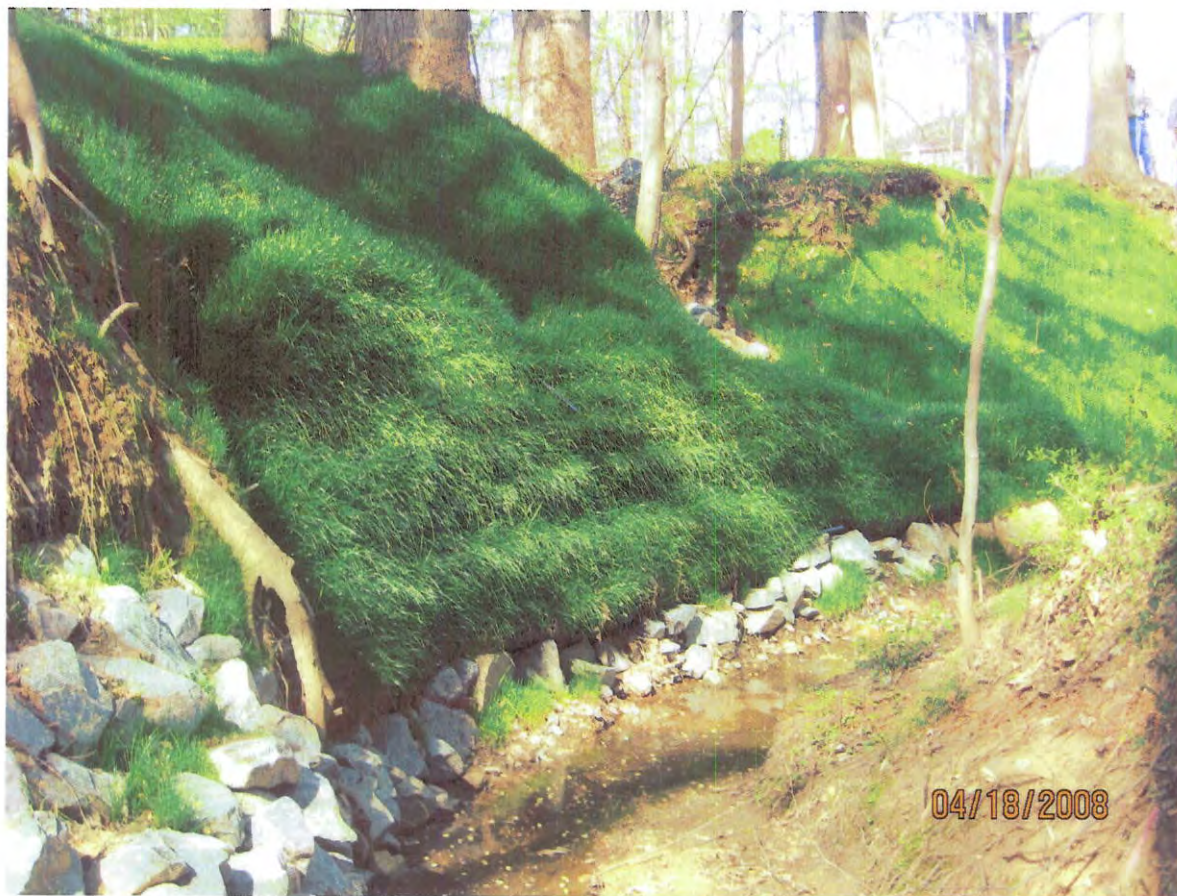


AFTER - bank stabilization upstream from structure 3.

Cabin Run Restoration, Preconstruction



BEFORE - Location to excavate channel bar near right bank and stabilize the left stream bank.



AFTER - Stabilized bank and widen channel

Cabin Run Restoration, Preconstruction



BEFORE – Need to stabilize bank with toe stone, filtrex sox and backfill.



AFTER - Location #7, stabilize bank with toe stone, filtrex sox and backfill.

Cabin Run Restoration, Preconstruction



BEFORE - Need to create a stone toe and cut slope to terrace to support filterxx bank stabilization.



AFTER - Location #8, Terrace slope, filterxx bank stabilization, stone toe.

Cabin Run Restoration, Preconstruction



BEFORE - Location to excavate sand deposition bar, create terrace and stabilize bank.



AFTER - Terrace creation and bank stabilization. Near weir #4.

Cabin Run Restoration, Preconstruction



BEFORE - Location for rock weir #4.



AFTER - Rock Weir #4

Cabin Run Restoration, Preconstruction



BEFORE –Above weir #4 below beech tree



After- above weir #4 create large terrace sill by stone toe, back fill and filter fabric applications.

Cabin Run Restoration, Preconstruction



BEFORE – above weir #4 continued.



AFTER – above weir #4 continued.

Cabin Run Restoration, Preconstruction



BEFORE - Location of "slope failure area" across right bank created sill and stabilization area.



AFTER - Bank cut and stabilization (across from created sill).

Cabin Run Restoration, Preconstruction



BEFORE –need stone toe treatment , grade bank and stream bank to be covered with compost tea.



AFTER - stone toe stabilization and bank covered with compost tea.

Cabin Run Restoration, Preconstruction



BEFORE - Location for rock weir #5.



AFTER - Rock weir #5.

Cabin Run Restoration, Preconstruction



BEFORE - Rock weir #5 under construction.

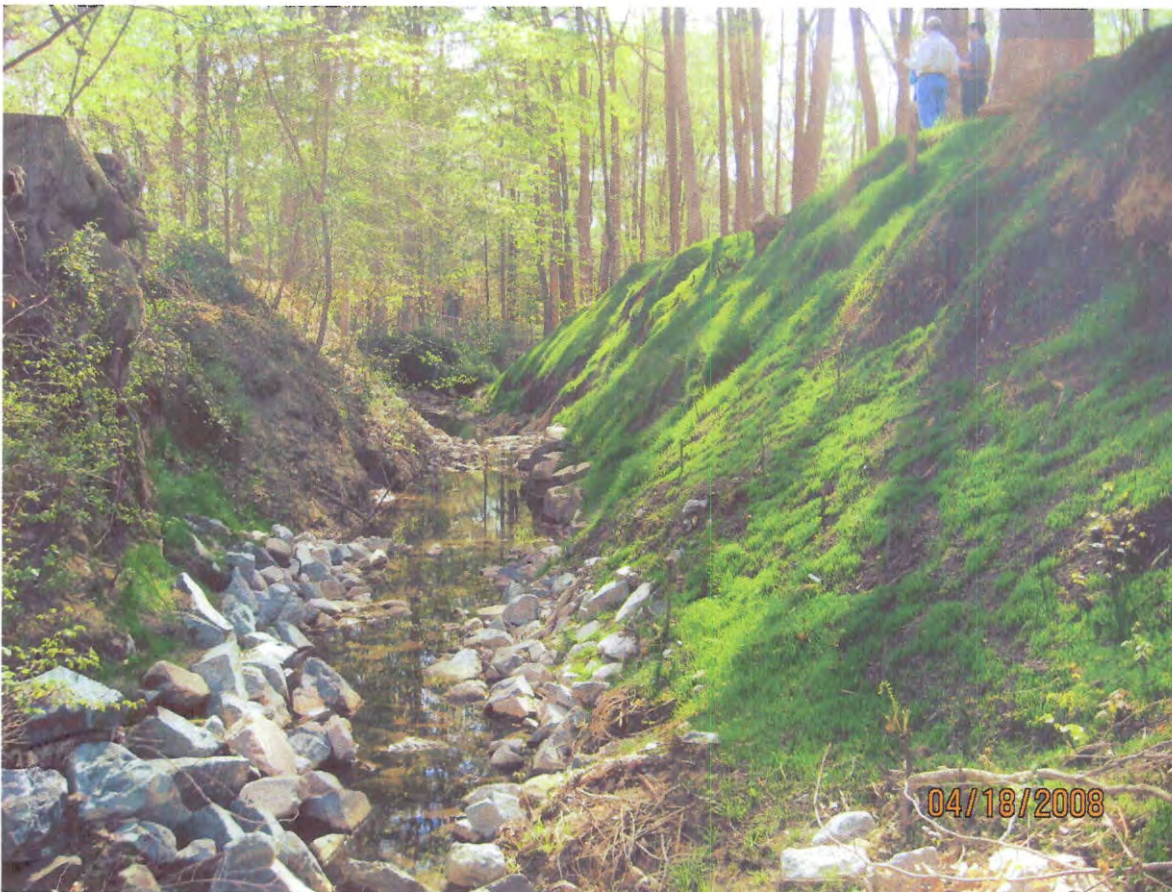


AFTER - rock weir #5.

Cabin Run Restoration, Preconstruction

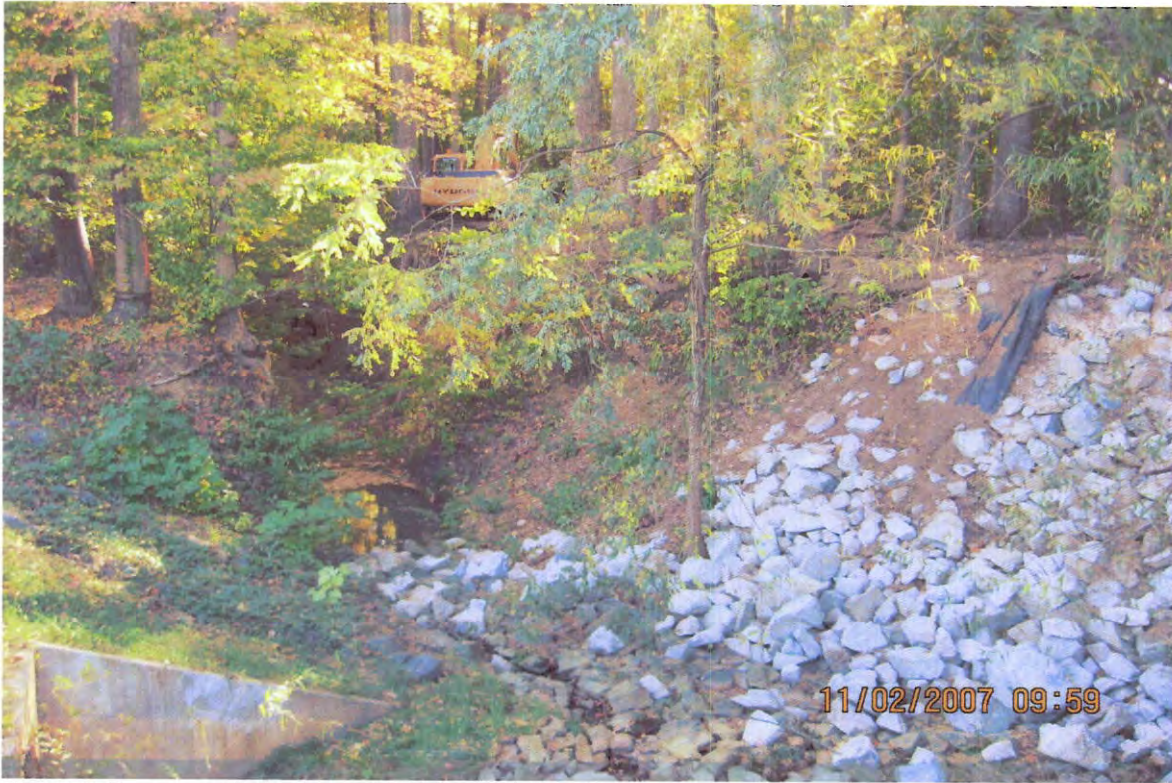


BEFORE – Above weir #5.



AFTER – Above weir #5, rock toe protection, lock down netting on slope and compost tea over netting.

Cabin Run Restoration, Preconstruction



BEFORE - At outfall of pond #343, additional placement of rip rap along the slope.



AFTER - At outfall of pond #343, additional placement of rip rap along the slope.